

ZENDURE
SuperCharged ∞



To Accelerate a Sustainable Future.

Truth and Integrity | Accountability and Responsibility | Energy Consciousness

PVHub 1200



Compatible with
1,200W Microinverter



10-year Warranty
15-year Use Life



All-metal Sealed
Enclosure



IP65

Name	PVHub 1200
Model	ZDSPVH1200
Compatible Batteries	Add-on Battery

PV Input

PV Input 1	16-60V \Rightarrow 13A, 500W Max
PV Input 2	16-60V \Rightarrow 13A, 500W Max
*Recommended PV module	210-650W Each, 1,300W Max in Total
Max DC Short Circuit Current	14.3A
Number of MPPT	2

Output to Microinverter

Recommended Output Power of Microinverter	400W ~ 1200W
Output Current to Microinverter	30A Max
Output Voltage to Microinverter	16V ~ 60V

Add-on Battery

Output to Battery (Add-on Battery)	800W Max
Input from Battery (Add-on Battery)	1,200W Max

Efficiency

MPPT Efficiency	99%
Efficiency of Output to Microinverter	98%

Protection

Overvoltage Protection, Overcurrent Protection, Short-circuit Protection, Overheat Protection	
Working Temperature	-20°C~45°C (-4 °F~113 °F)
Wireless Type	Bluetooth, 2.4GHz Wi-Fi
IP Rating	IP65
Warranty	10 Years

Dimensions and Weight

Dimensions (LxWxH)	363 x 246 x 64mm (14.29" x 9.69" x 2.52")
Net Weight	\approx 4.7kg (10.4 lbs)

*Solar panels may reduce power generation due to factors such as weather, dust and dirt, shading and poor orientation. To maximize the use of solar energy, you can connect approximately 1.3 times the nominal PV Input of the Hub.

Hub 2000



All-metal Sealed Enclosure



IP65



Up to 1,800W PV Input



Support up to 2,400W PV Modules

Name	Hub 2000
Model	ZDHUB2000
Compatible Batteries	Add-on Battery, SBV, Satellite Battery

PV Input

PV Input 1	16-60V \Rightarrow 26A, 900W Max
PV Input 2	16-60V \Rightarrow 26A, 900W Max
*Recommended PV module	1000W Each (Total support 2400W Max)
Max DC Short Circuit Current	33A
Number of MPPT	2

Output to Microinverter

Recommended Output Power of Microinverter	400W ~ 1,200W
Output Current to Microinverter	30A Max
Output Voltage to Microinverter	16V ~ 60V

Battery

**Output to Battery (Add-on Battery)	1,800W Max
Input from Battery (Add-on Battery)	1,200W Max
Output to SBV/Satellite Battery	1,800W Max
Input from SBV/Satellite Battery	1,200W Max

Efficiency

MPPT Efficiency	99%
Efficiency of Output to Microinverter	98%

Protection

Overvoltage Protection, Overcurrent Protection, Short-circuit Protection, Overheat Protection	
Working Temperature	-20°C~65°C (-4°F~149°F)
Wireless Type	Bluetooth, 2.4GHz & 5GHz Wi-Fi
IP Rating	IP65
Warranty	10 Years

Dimensions and Weight

Dimensions (LxWxH)	363 x 246 x 64mm (14.29" x 9.69" x 2.52")
Net Weight	≈ 5.2kg (11.5 lbs)

*Solar panels may reduce power generation due to factors such as weather, dust and dirt, shading and poor orientation. To maximize the use of solar energy, you can connect approximately 1.3 times the nominal PV Input of the Hub.

**With sufficient sunlight and the connection of 2 or more Add-on Batteries units, the Hub 2000 can provide a charging power of 1800W.

AB1000



Stackable up
to 4 batteries



10-year Warranty
15-year Use Life



All-Metal Sealed
Enclosure



IP65

Name	AB1000
Model	ZDAB1000
Capacity	960Wh(20Ah 48V)
Battery Type	LiFePO ₄
Life Cycle	3,000 Cycles (DOD≥80%)/ 6,000 Cycles(DOD≥70%)
Input	48V $\overline{=}$ 16,6A, 800W Max
Output	48V $\overline{=}$ 25A, 1200W Max
Expandable Battery Quantity	4
Maximum Expandable Capacity	960 x 4=3,840 Wh
Overvoltage Protection	Charging & Discharging
Overcurrent Protection	Charging & Discharging
Short-circuit Protection	Yes
Overheat Protection	Yes
IP Rating	IP65
Warranty	10 Years
Charging Temperature	0°C~55°C (32°F~131°F)
Discharging Temperature	-20°C~60°C (-4°F~140°F)
Compatibility with AB1000	Yes
Finish	Integrated Die-casting Design

Dimensions and Weight

Dimensions (LxWxH)	350 x 200 x 187mm (13.78" x 7.87" x 7.36")
Net Weight	≈11.5kg (25.4 lbs)

AB2000



Rechargeable down
to -20°C(-4°F)



Compatible
with AB1000



Space-saving



Up to 7,680 Wh

Name	AB2000
Model	ZDAB2000
Capacity	1,920Wh(40Ah 48V)
Battery	LiFePO ₄
Life Cycle	3,000 Cycles (DOD≥80%)/ 6,000 Cycles (DOD≥70%)
Input	48V = 25A, 1,200W Max
Output	48V = 25A, 1,200W Max
Expandable Battery Quantity	4
Maximum Expandable Capacity	1,920 x 4=7,680 Wh
Overvoltage Protection	Charging & Discharging
Overcurrent Protection	Charging & Discharging
Short-circuit Protection	Yes
Overheat Protection	Yes
Self-heating Function	Yes
IP Rating	IP65
Warranty	10 Years
Charging Temperature	0°C~55°C (32°F~131°F)
Discharging Temperature	-20°C~60°C (-4°F~140°F)
Automatically Self-heating Function	-20°C~0°C (-4°F~32°F)
Compatibility with AB1000	Yes
Finish	Integrated Die-casting Design

Dimensions and Weight

Dimensions (LxWxH)	350 x 200 x 298mm (13.78" x 7.87" x 11.73")
Net Weight	21.62kg (47.7 lbs)

Hoymile HMS-800-2T



- High-powered microinverter for 2-in-1 with output power up to 1000 VA
- With Reactive Power Control, compliant with EN 50549-1:2019, VDE-AR-N 4105:2018, VFR2019, etc.
- Safer with rapid shutdown compliance and isolated transformer
- Sub-1G wireless solution allows stable communication

Name	Hoymile HMS-800-2T
Model	HMS-800-2T
IP Level	Outdoor-IP67
Warranty	12 Years

PV Input(DC)

Commonly Used Module Power	320 to 540+ W
MPPT Voltage Range	16-60V
Maximum Input Current	2*14A
Number of MPPTs	2
Number of Inputs per MPPT	1

Output (AC)

Rated Output Power	800W
Rated Output Current	3.48A
Nominal Output Voltage/Range	230/180 - 275V
Nominal Frequency /Range	50/45 - 55Hz

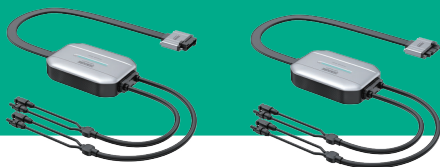
Efficiency

CEC Peak Efficiency	96.7%
Nominal MPPT Efficiency	99.8%
Night Power Consumption	< 50mW
Working Temperature	-40°C to 65°C (-40°F~149°F)

Dimensions and Weight

Dimensions	261 x 180 x 31mm (10.28" x 7.09" x 1.22")
Weight	3.2 kg (7.1 lbs)

PVHub Mini



Plug and Play



All-Metal Sealed
Enclosure



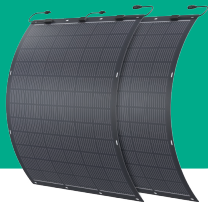
0% Energy
Wasted



APP Remote
Control

Name	PVHub Mini
Model	ZDPVHMF(to Satellite Battery) ZDPVHMM(to SBV)
Input voltage	40-60V
Maximum Input current(A)	30A
Output	800W
Overvoltage	60V
Undervoltage	40V
Product Size	Hub: 228 x 155 x 54 mm (8.98" x 6.1" x 2.13") Cable: 600 mm (23.62")
APP	Compatible with Android 5.0, iOS11.0 or above
Bluetooth Connection	Bluetooth 5.0, 2.402GHz - 2.480GHz
WIFI Connection	2,400-2,483.5MHz - 5,180-5,825MHz

210W Flexible Solar Panel*2



70% lighter than rigid solar panels



Bendable up to 213°



Glass-free safe for all balconies



IP67 Protection



12-year warranty

Name	210W Flexible Solar Panel*2
Model	ZD210FSPBD
Cell Structure	Monocrystalline
Rated Power (Each Panel)	210W
Open Circuit Voltage (Each Panel)	49.2V (STC)
Short Circuit Current (Each Panel)	5.4A (STC)
Operating Voltage (Each Panel)	41.4V (STC)
Operating Current (Each Panel)	5.1A (STC)
Temperature Coefficient	TkVoltage-0.36%/K TkCurrent +0.07%/K TkPower -0.38%/K
IP Level	IP67
Module Warranty	12 Years
Power Guarantee	25 Years (≥85%)
Certification	CE,FCC,ROHS,REACH,IP67,WEEE,TUV

Dimensions and Weight

Product Dimensions (Each Panel)	1083 x 1104 x 2.5 mm (42.68" x 43.48" x 0.1")
Net Weight (Each Panel)	≈ 4.5 kg (9.9 lbs)

Satellite Plug



Intelligent Regulation
with SolarFlow



Realtime Monitoring

Name	Satellite Plug
Model	ZDSATP16
Size	52 x 52 x 83mm (2.05" x 2.05" x 3.27")
Weight	56g (0.12 lbs)
Input Voltage	AC100~ 240V
Input Frequency	50/60Hz
Maximum Load Current	Resistive, 16A max
Connection Type	2.4G WIFI + Bluetooth
Working Power Consumption	< 1.3W
Standby Power Consumption	< 0.7W
Security Mechanism	WPA/WPA2
Encryption Type	WEP/TKIP/AES
Button	Power/WIFI Setting
APP upgrade	OTA
Device sharing	Support
Working Temperature (°C)	-5-40°C (23-104°F), humidity <80%
Storage Temperature (°C)	-20-60°C (-4-140°F), humidity <80%

Features

- Remote Control (Zendure APP)
- Voice Control (Alexa & Google Assistant)
- Power Monitoring (monitor daily and monthly electricity consumption)
- Energy Consumption Schedule (Schedule to switch the machine)
- Over-load Protection
- V0 fireproof material

Satellite Monitor CT



**Intelligent Regulation
with SolarFlow**



Realtime Monitoring

Name	Satellite Monitor CT
Model	ZDSMCT
Power Supply	100 ~ 240VAC ±10%
Frequency	50/60Hz
Consumption	< 1.1w
Max Measurement Per Channel	150A
Protection Level	IP44
Operating Temperature	-20°C~70°C (-4°F~158°F)
Storage Temperature	-40°C~85°C(-40°F~185°F)
Operating Humidity (RH)	5%~ 95%
Height of the altitude	0 - 3,000M
Wireless Type	Bluetooth, Wi-Fi

Dimensions and Weight

Dimensions	140 x 35 x 77 mm (5.51" x 1.38" x 3.03")
Weight	0.181 kg (0.4 lbs)

SolarFlow Super Flat MC4 Cable



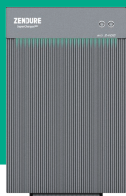
Name ----- SolarFlow Super Flat MC4 Cable
Model ----- ZDFLMC41M(1m/39.37"),ZDFLMC43M(3m/118.11")
Length ----- 1m, 3m (39.37", 118.11")

SolarFlow Battery Cable



Name ----- SolarFlow Battery Cable
Model ----- ZDBC3M(3m/118.11"),ZDBC5M(5m/196.85")
Length ----- 3m, 5m (118.11", 196.85")

AIO 2400



Installation friendly



1200W Solar Input
2,4kWh Capacity



Concise and
Tangle-free Design



Self-heating
Function

Name	AIO 2400
Model	ZDAIO2400
Capacity	2,400Wh
Battery	LiFePO ₄
Life Cycle	4,000 Cycles (DOD≥80%)/ 8,000 Cycles(DOD≥70%)
Wireless Type	Bluetooth, 2.4G Hz Wi-Fi
IP Rating	IP65
Warranty	10 Years

PV Input

Input DC Voltage Range	16-60V
Number of MPPTs	2
PV Input 1	16-60V ⇒14A, 400W Max
PV Input 2	16-60V ⇒20A, 800W Max
Rated DC Current	MPPT 1: 14A MPPT 2: 20A

Output to Microinverter

Recommended Microinverter's Power	0-1,200W
Microinverter Output 1	16-60V ⇒30A Max, 1,200W Max
Microinverter Output 2	16-60V ⇒30A Max, 1,200W Max
Total Output	1200W

Efficiency

MPPT Efficiency	99%
Output Efficiency	98%

Protection

Overvoltage Protection	Yes
Overcurrent Protection	Yes
Short Circuit Protection	Yes
Temperature Protection	Yes
Overcharge Protection	Yes
Overdischarge Protection	Yes
Self-heating Function	Yes, active from -20°C (-4°F)
Charging Temperature	0°C~55°C (32°F~131°F)
Discharging Temperature	-20°C~60°C (-4°F~140°F)

Dimensions and Net Weight

Dimensions(Without Bracket and Top Cover)	657 × 427 × 150 mm (25.87" × 16.81" × 5.91")
Net Weight(Without Bracket and Top Cover)	≈31.3 kg (69 lbs)
Net Weight(With Bracket and Top Cover)	≈37 kg (81.6 lbs)

Shelly Enabled

Now, SolarFlow has achieved intelligent linkage with Shelly related products. Through the Zendure APP, you can bind related products to realize real-time power monitoring, intelligent power adjustment and other functions.



Pro 3EM



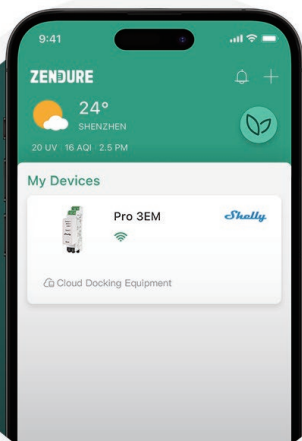
3EM



Plus Plug S



Smart Power Regulation



Real Time Monitoring



Founded in 2017, Zendure is one of the fastest-growing EnergyTech start-ups located in the technology hubs of Silicon Valley, USA, and the Greater Bay Area, China, Japan, and Germany.

Our purpose is to accelerate a sustainable future.

Our mission is to deliver reliable and affordable clean energy for households worldwide by popularizing the latest EnergyTech.

Contact Us

To learn more visit [Zendure.com](https://zendure.com) and follow Zendure on Facebook, Instagram, Twitter, and LinkedIn.

American site: <https://zendure.com/>
Japanese site: <https://zendure.co.jp/>
European site: <https://zendure.de/>
Distributors: sales@zendure.com
PR&Influencer: pr@zendure.com



<https://zendure.de/>